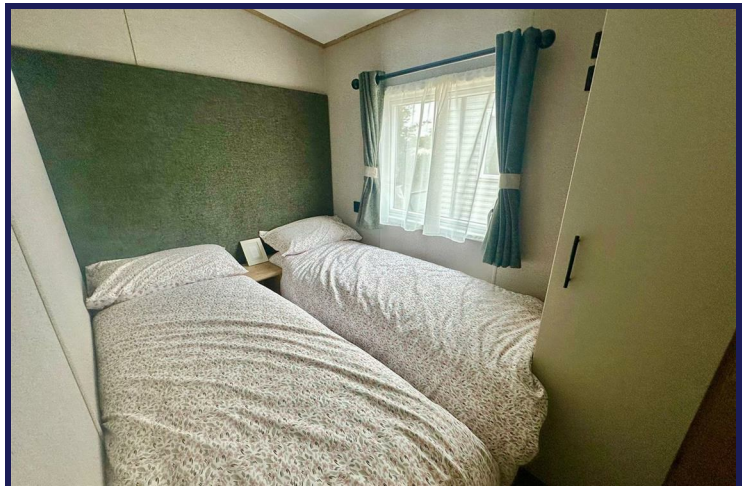




A.B.I Hamilton – New 2025 Model Hoburne Bashley Holiday Park

New Milton, BH25 5QR

Asking Price £55,000

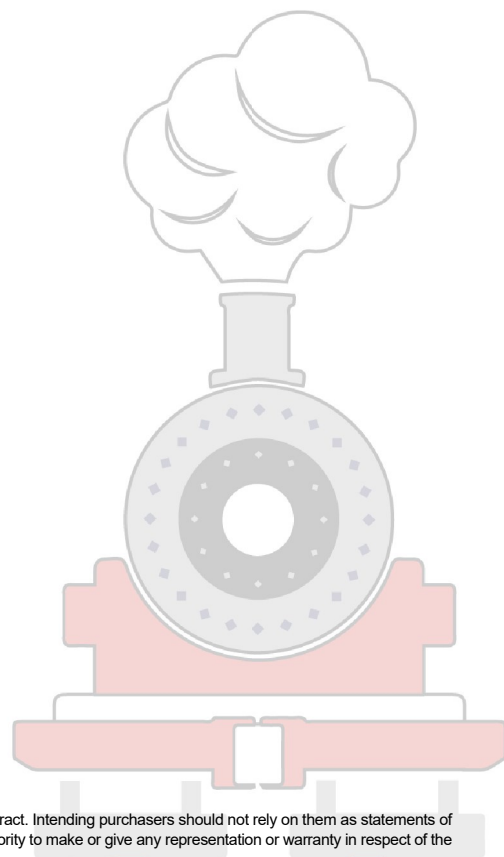
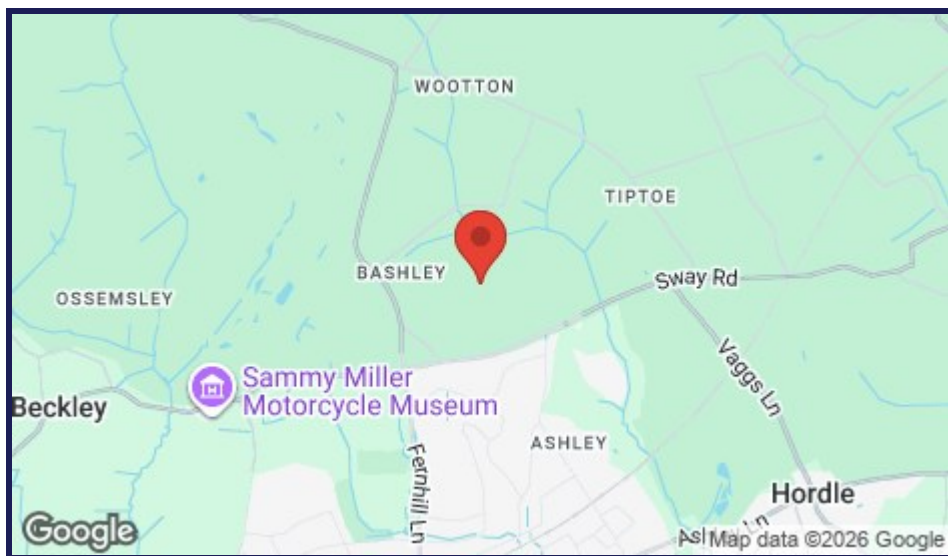


Nestled within the serene Hoburne Bashley Holiday Park in New Milton, this splendid A.B.I Hamilton Park Home is a remarkable opportunity for those seeking a tranquil retreat. This brand-new 2025 model boasts two well-appointed bedrooms, a shower room and cloakroom, making it an ideal choice for families or couples looking for a peaceful getaway.

The property features a welcoming reception room that provides a perfect space for relaxation and entertaining. The front enclosed decking, complete with skirting and steps, offers an inviting outdoor area to enjoy the fresh air and beautiful surroundings.

For just £55,000, this exceptional offer includes a year's insurance and waives pitch fees for the 2025/26 season, ensuring that your investment is both secure and economical. With a full 15-year licence, this park home promises long-term enjoyment and peace of mind.

We currently have three of these stunning models in stock, making it a fantastic opportunity for anyone considering ownership in this picturesque location. With such an attractive package, this property is truly a no-brainer for those looking to embrace the joys of park home living. Don't miss out on this incredible chance to own a slice of paradise at Hoburne Bashley.



These particulars, whilst believed to be accurate are set out as a general outline only for guidance and do not constitute any part of an offer or contract. Intending purchasers should not rely on them as statements of representation of fact, but must satisfy themselves by inspection or otherwise as to their accuracy. No person in this firm's employment has the authority to make or give any representation or warranty in respect of the property.



7 Institute Rd, Swanage BH19 1BT

Registered Office: Hull Gregson & Hull Ltd
Leanne House, 6 Avon Ct, Granby Industrial Estate, Weymouth DT4 9UX
Company Registration Number: 04203496

